







**BULLARD
BOLLARDS**

Maximaestro ST

The Maestro programme of luminaires offer flexibility in application through lamp and distribution options. The products are made of EN 44100 die-cast aluminium oxidation resistant. The products are eminently suitable for various commercial and architectural applications in the external environment. Street lighting, area lighting, flood lighting, facades and perimeters.



CERTIFICATION	 
IP / IK RATING	IP 65 / IK 10
CLASSIFICATION	class I / II   class II upon request
DIMMABLE	dimnable DALI versione available upon request
BODY	die-cast aluminium EN AB 44100 high resistance to oxidation
DIFFUSER	soda-lime tempered glass
EXTERNAL FIXINGS	stainless steel A4-70 treated with highly antioxidant water-repellent lubricating solution. The treatment ensures easy opening of the product for maintenance
SEALING GASKET	silicone
CABLE ENTRY	polypropilene cable gland M20
POSITIONING	mechanical system allows fixture locking and adjustment.
LIGHT SOURCE	Led integral
FINISH	powder coating polyester high resistance to UV and oxidation

g@gordonbullard.com
www.bullardbollards.com
 269-569-6700

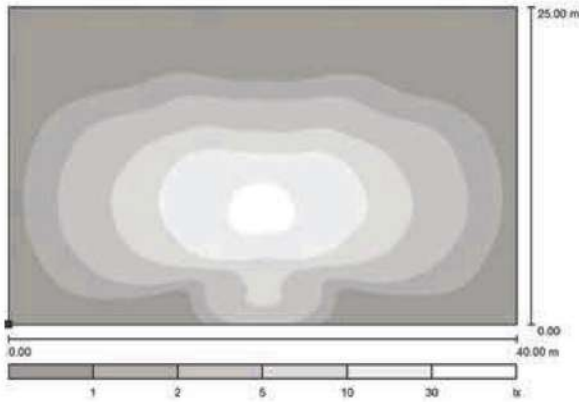


991 South Gull Lake Dr
 Richland, MI 49083, USA
 1 877-964-464

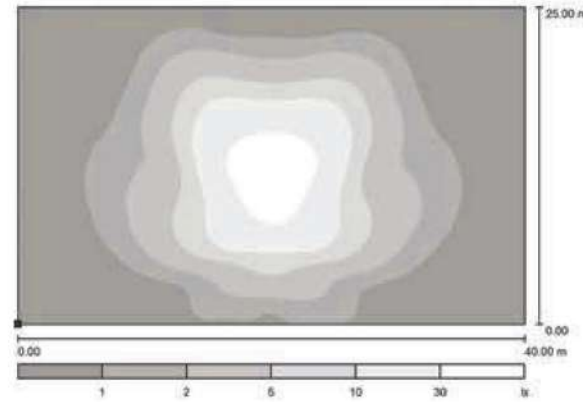
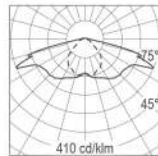


BULLARD
BOLLARDS

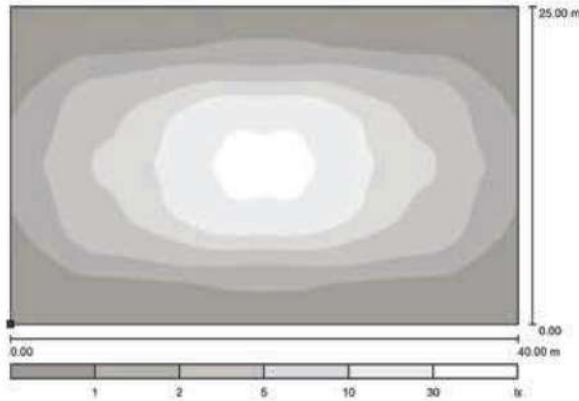
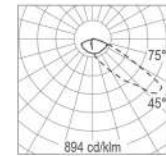
Maximaestro ST



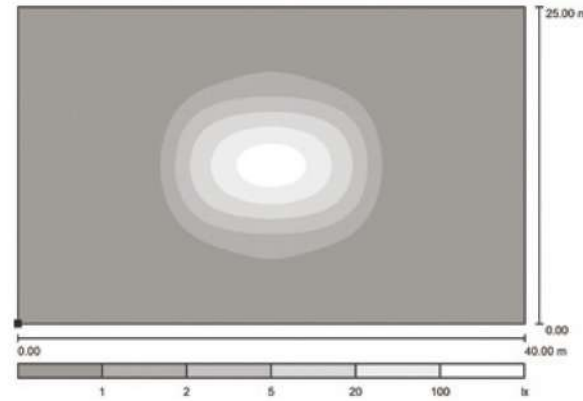
66W Led
Dimension 24 x 40 mt
Hight 6mt



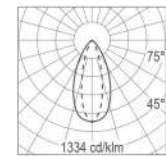
66W Led
Dimension 24 x 40 mt
Hight 6mt



66W Led
Dimension 24 x 40 mt
Hight 6mt



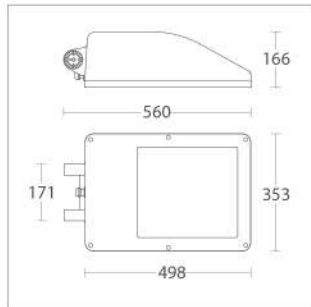
66W Led
Dimension 24 x 40 mt
Hight 6mt





BULLARD BOLLARDS

Maximaestro ST



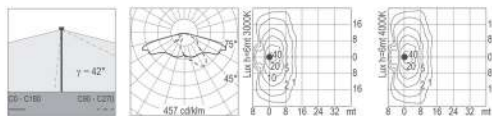
IP65 IK08

DALI upon request

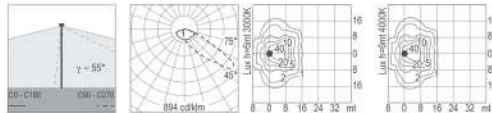
colour code

.05 anth
.13 light

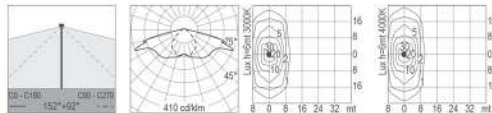
5483.145.T.-- 62 W Led 3000 K 8542 lm
5483.146.T.-- 62 W Led 4000 K 9425 lm
220-240 V 50/60 HZ
clear diffuser
led driver integral



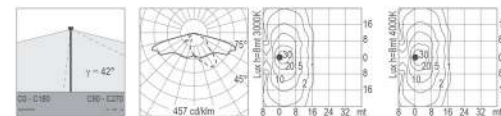
5483.158.T.-- 62 W Led 3000 K 8542 lm
5483.159.T.-- 62 W Led 4000 K 9425 lm
220-240 V 50/60 HZ
clear diffuser
led driver integral



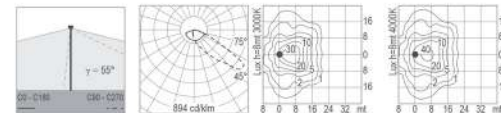
5483.160.T.-- 62 W Led 3000 K 8542 lm
5483.161.T.-- 62 W Led 4000 K 9425 lm
220-240 V 50/60 HZ
clear diffuser
led driver integral



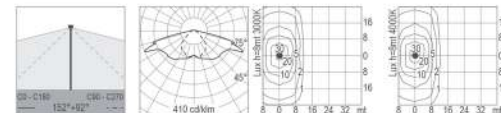
5483.144.T.-- 88 W Led 3000 K 11377 lm
5483.139.T.-- 88 W Led 4000 K 12687 lm
220-240 V 50/60 HZ
clear diffuser
led driver integral



5483.164.T.-- 88 W Led 3000 K 11377 lm
5483.165.T.-- 88 W Led 4000 K 12687 lm
220-240 V 50/60 HZ
clear diffuser
led driver integral



5483.166.T.-- 88 W Led 3000 K 11377 lm
5483.167.T.-- 88 W Led 4000 K 12687 lm
220-240 V 50/60 HZ
clear diffuser
led driver integral



g@gordonbullard.com
www.bullardbollards.com
269-569-6700



991 South Gull Lake Dr
Richland, MI 49083, USA
1 877-964-464



**BULLARD
BOLLARDS**

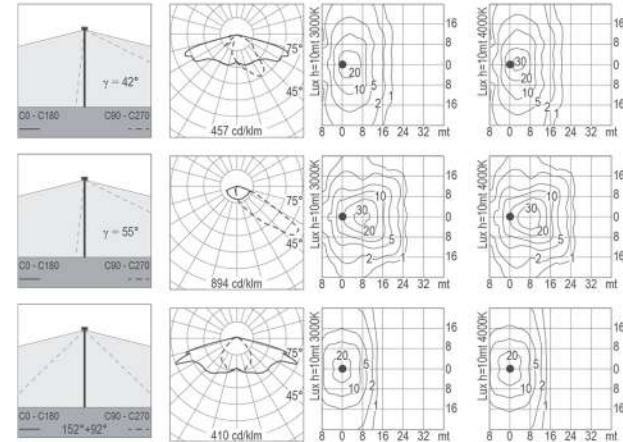
Maximaestro ST



5483.170.T.-- 125 W Led 3000 K 14282 lm
5483.171.T.-- 125 W Led 4000 K 16150 lm
 220-240 V 50/60 HZ
 clear diffuser
 led driver integral

5483.172.T.-- 125 W Led 3000 K 14282 lm
5483.173.T.-- 125 W Led 4000 K 16150 lm
 220-240 V 50/60 HZ
 clear diffuser
 led driver integral

5483.174.T.-- 125 W Led 3000 K 14282 lm
5483.175.T.-- 125 W Led 4000 K 16150 lm
 220-240 V 50/60 HZ
 clear diffuser
 led driver integral



g@gordonbullard.com
www.bullardbollards.com
 269-569-6700

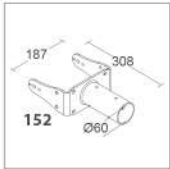


991 South Gull Lake Dr
 Richland, MI 49083, USA
 1 877-964-464

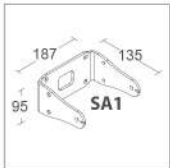


BULLARD BOLLARDS

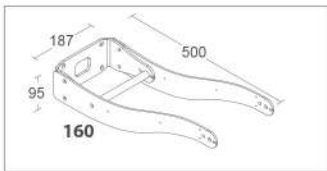
Maximaestro ST



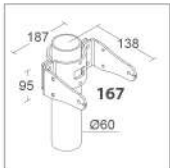
152.--
Bracket support Ø60 mm



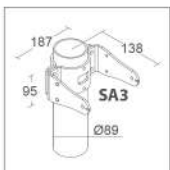
SA1.--
Wall bracket



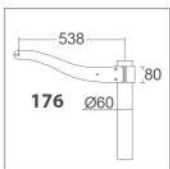
160.--
*Wall bracket + column
bracket 500 mm*



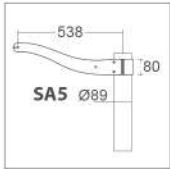
167.--
Column support Ø60 mm



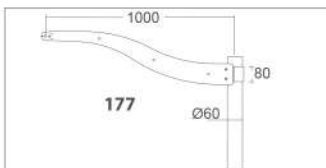
SA3.--
Column support Ø89 mm



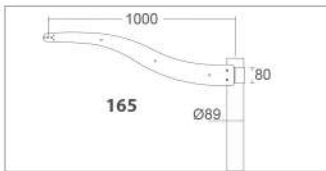
176.--
*Column support Ø60 mm
+ bracket 500 mm*



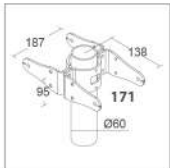
SA5.--
*Column support Ø89 mm
+ bracket 500 mm*



177.--
*Column support Ø60 mm
+ bracket 1000 mm*



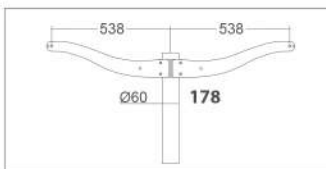
165.--
*Wall bracket + column
bracket 500 mm*



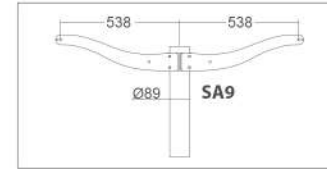
171.--
*Double column
support Ø60 mm*



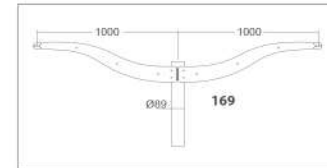
SA7.--
*Double column
support Ø89 mm*



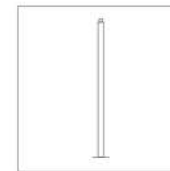
178.--
*Double column support Ø60 mm
+ double bracket 500 mm*



SA9.--
*Double column support
Ø89 mm + double
bracket 500 mm*



169.--
*Double column support
Ø89 mm + double
bracket 1000 mm*



p. 415
Poles