



PRODUCT CODE:

GH1120.BAMT300EC

CONSTRUCTIVE & DIMENSIONAL:

Application field:	Shrubs and hedges, Columns, Facade, Monuments & Statues, Little walls, Walls, Trees
External screws:	Stainless steel A4-70 treated with highly antioxidant water-repellent lubricating solution
Diameter:	35mm(1,37")
Length:	38mm(1,49")

ELECTRICAL:

Description:	1 x 2.1 W LED 3000 K CRI>90 196 lm
Operating Power:	700 mA
Number of heads:	1
Number of Circuits:	1
Control gear:	700 mA not included
Driver positioning:	Remote
Control gear type:	Electronic
Cable entry:	Fixture supplied with cable 0,5m with IP68 connector
Cord length:	0.5m
Water-Lock system:	Included
Emergency kit:	Not available



OPTICAL:

Beam type:	Bollard 1 light
Beam angle:	47°
Light distribution:	Symmetric
Beam directionability:	Fixed
Diffuser material:	Soda-lime tempered glass 4mm
Diffuser finish:	Clear





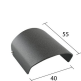
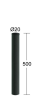



LIGHTING SOURCE:

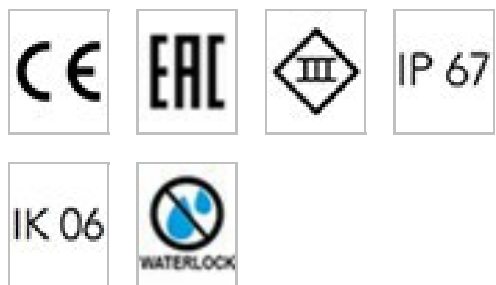
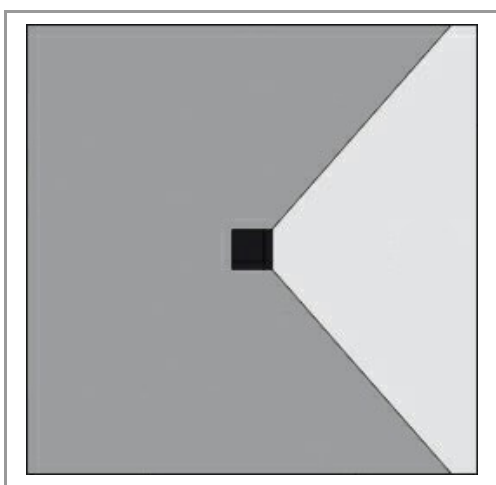
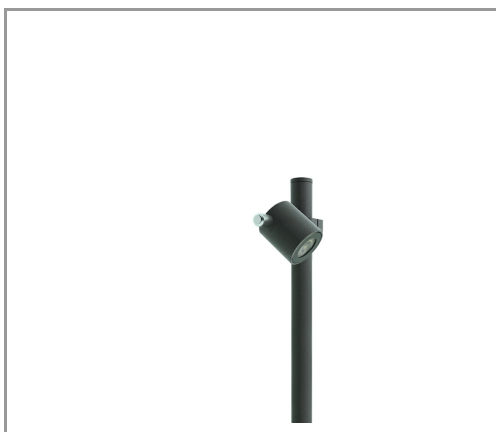
Light source:	LED
Power:	2.1 W
LED voltage range:	3V
Current:	700 mA
ZVEI - Led Type:	LED module
Color temperature:	3000 K
Binning:	Step MacAdam 3
Color rendering index:	CRI>90
Nominal LED emission:	196 lm
Light source:	Included
Ambient temperature operating range:	-20 °C ÷ +35 °C

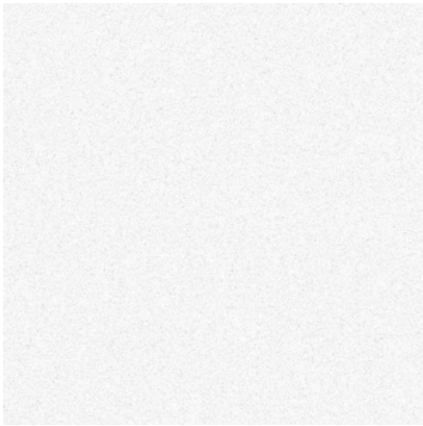
FINISH CODE:

 .05 Dark grey (matt)	 .19 Light Grey
--	---

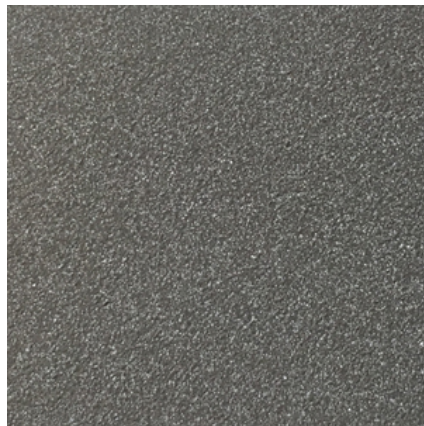
ACCESSORIES:

				
Driver 31W 700mA IP20 AC624-700mA	IP66 remote power supply box AC205	IP 68 fast connector Small AC204	Driver 14W 700mA IP67 AC624-IP67	Hood Segno - Point Spot 2 AC647
				
500mm AC454	Post Ø20mm - H 1000mm AC455	Post Ø20mm - H 1500mm AC456	Post Ø20mm - H 250mm AC453	





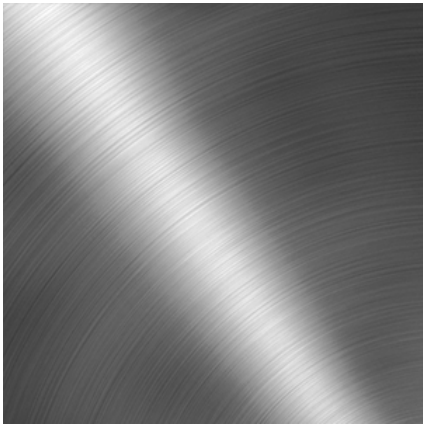
.01 WHITE



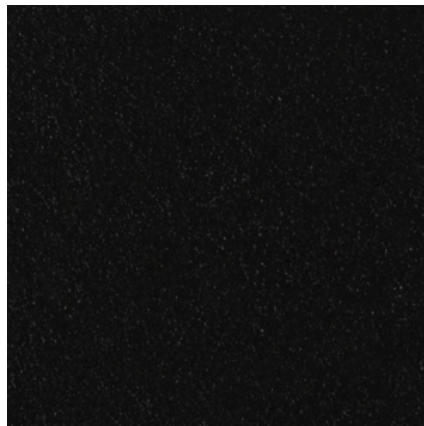
.05 ANTHRACITE GREY



.19 LIGHT GREY



.15 STAINLESS STEEL



.02 BLACK



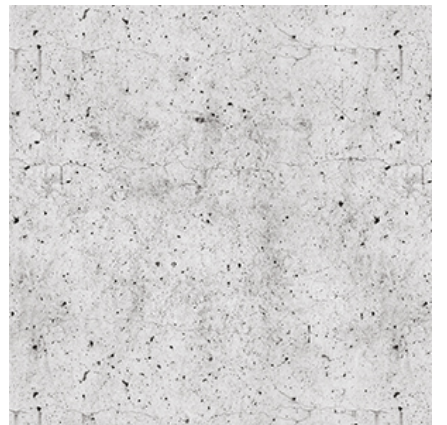
.32 OAK EFFECT



.45 RUST



.34 GLASS



.43 CONCRETE EFFECT